

FORM No. 1.

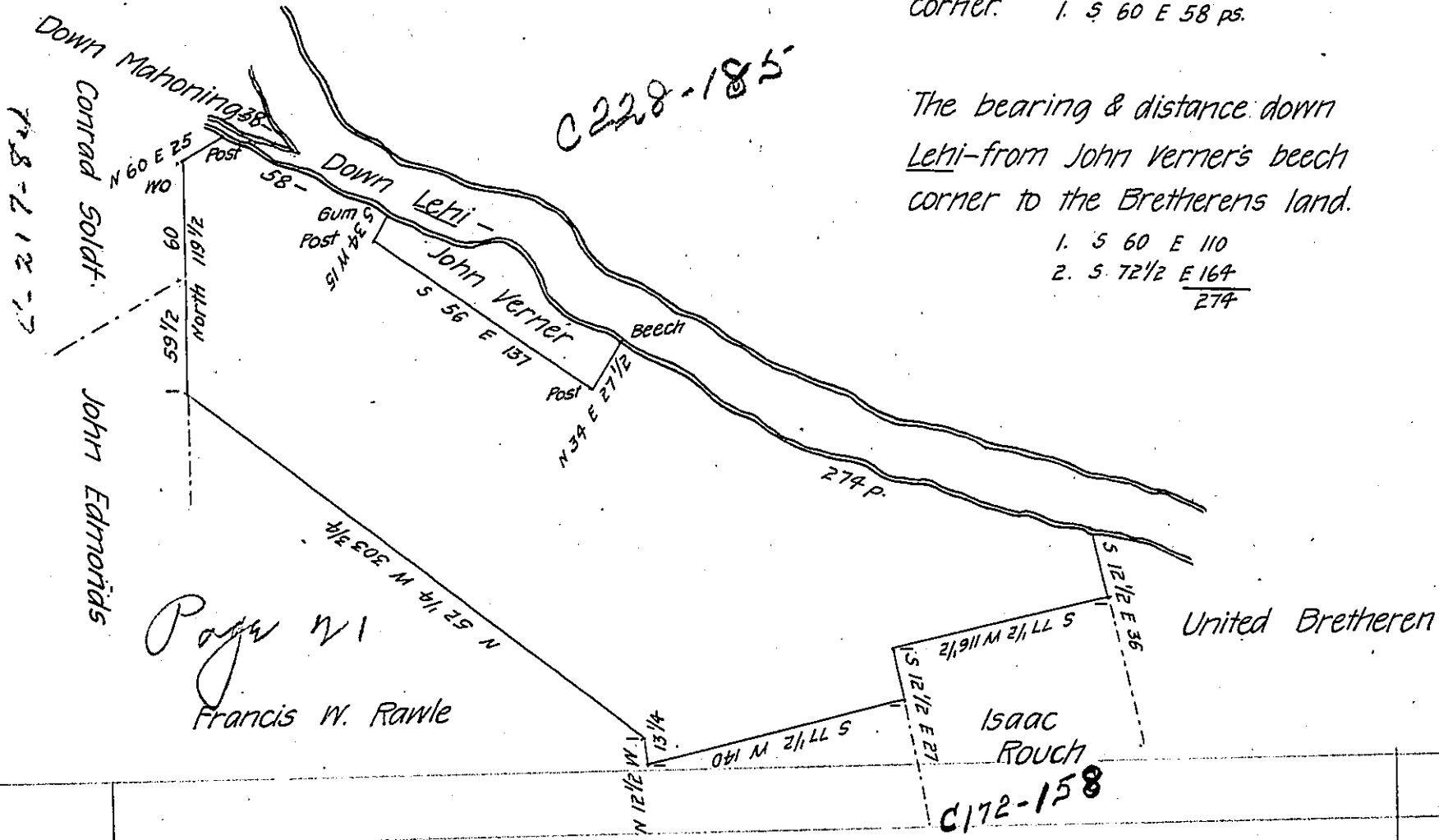
The bearing & distance
down Mahoning Creek.

1. S 70 E 10
 2. S 57 E 13
 3. S 77 E 15
-
- 38

The bearing & distance down
Lehi—from the mouth of Ma-
honing to John Verner's gum
corner. 1. S 60 E 58 ps.

The bearing & distance down
Lehi—from John Verner's beech
corner to the Bretherens land.

1. S 60 E 110
 2. S 72 1/2 E 164
-
- 274



By virtue of a warrant dated the 26 July 1792 Surveyed the
28th July 1794 to Elizabeth M. Rawle the above described tract
of land situate on the west side of Lehi—between Mahoning and
Lizard Creeks in the County of Northampton Containing three
hundred and ninety nine acres fifty perches & the allowance of
Six P. Cent &c^a

P—Geo. Palmer D.S.

To Daniel Brodhead Esquire
Surveyor General.

IN TESTIMONY that the above is a copy of the original remaining on file in
the Department of Internal Affairs of Pennsylvania, made
conformably to an Act of Assembly approved the 16th day of
February, 1833, I have hereunto set my Hand and caused
the Seal of said Department to be affixed at Harrisburg,
this tenth day of October 1906.

Isaac Brown
Secretary of Internal Affairs.